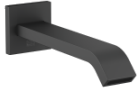
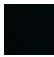
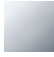
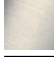
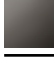



13 801 670



- Ausladung 200 mm
- rechteckiger Normalstrahl
- Bohrungsdurchmesser 37 mm
- Anschluss 1/2"
- Durchfluss max. 25,1 l/min bei 3 bar Fließdruck

	Schwarz matt	13 801 670-33
	Chrom	13 801 670-00
	Platin gebürstet	13 801 670-06
	Dark Chrome	13 801 670-19
	Chrom gebürstet	13 801 670-93

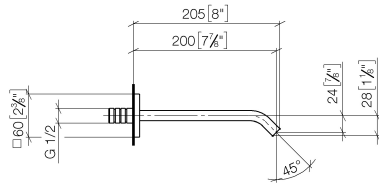
Empfohlenes Zubehör



- UP-Wandwinkel -** 35 085 970 90
- Min. Einbautiefe 90 mm
 - Max. Einbautiefe 163 mm

13 801 670

mm [inches]



Durchflussdiagramm



Zertifikate

IAPMO_4976 (6).

